

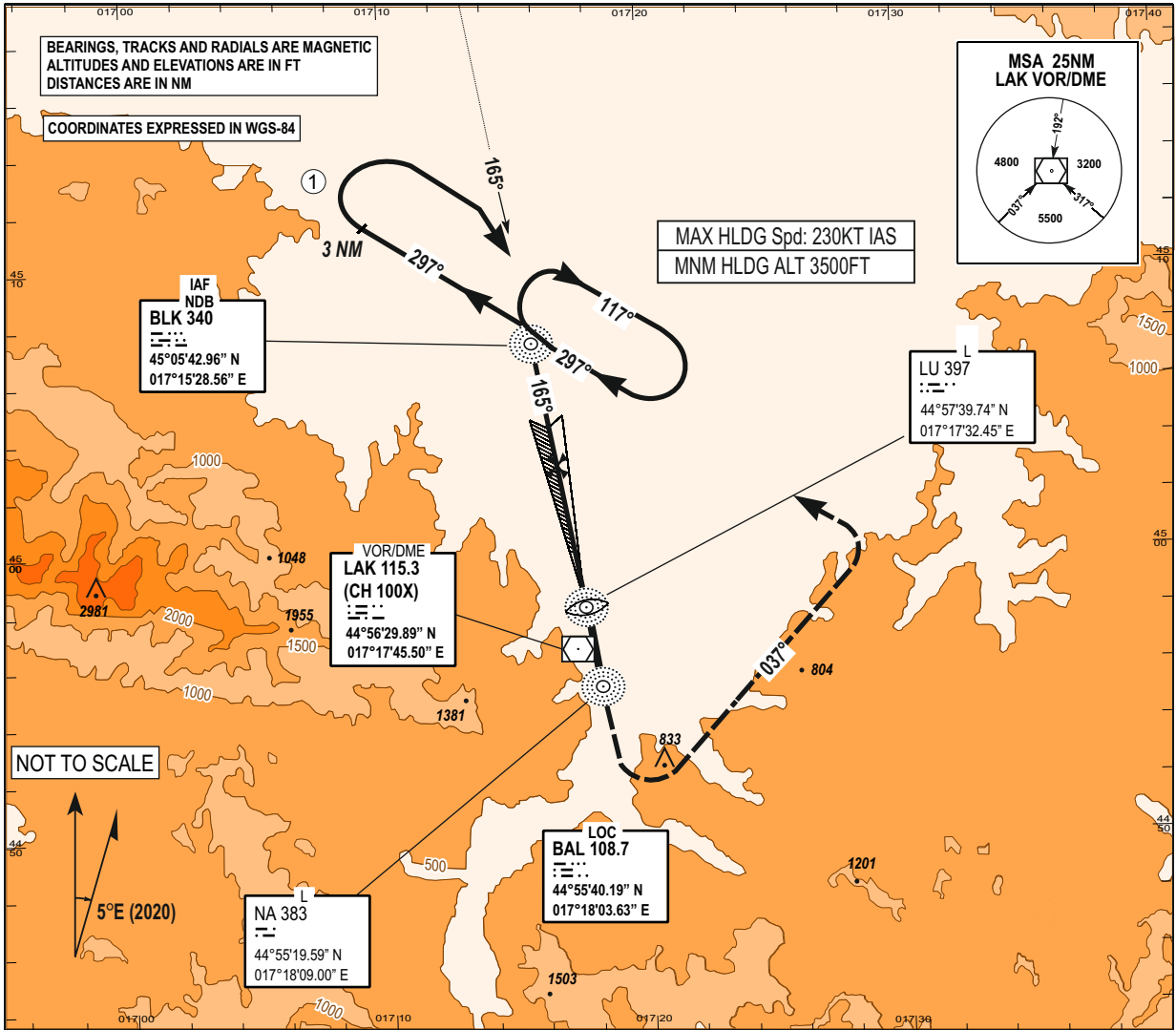
**INSTRUMENT  
APPROACH  
CHART - ICAO**

AD ELEV 401 FT  
HEIGHTS RELATED TO  
THR RWY16 ELEV 376 FT

TRANSITION  
ALTITUDE  
10 000FT  
VAR 5°E (2020)

TWR/APP 133.075  
SPARE 124.175  
ATIS 122.625

**BANJA LUKA (LQBK)  
ILSy RWY 16**



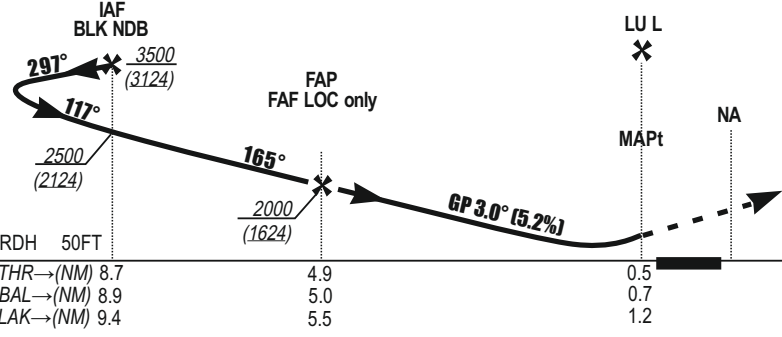
DME DIST/ALTITUDE(HEIGHT) TABLE

DME BAL	9.0	8.0	7.0	6.0	5.0	4.0	3.0	2.0	1.0
DME LAK	9.5	8.5	7.5	6.5	5.5	4.5	3.5	2.5	1.5
ALT (HGHT)	<b>3240</b>	<b>2920</b>	<b>2600</b>	<b>2290</b>	<b>1970</b>	<b>1650</b>	<b>1330</b>	<b>1010</b>	<b>690</b>
5.2% APCH	(2864)	(2544)	(2224)	(1914)	(1594)	(1274)	(954)	(634)	(314)

FAP/FAF TO LU DISTANCE

KT	80	120	150	180	210
MIN : SEC	3:18	2:12	1:46	1:28	1:15
Rate of descent 3° FT/MIN	420	640	800	950	1110

CHG: LAK VOR/DME COORDINATES;



**MISSED APPROACH:**  
Climb on RWY TR to 1500 FT.  
Then turn **LEFT** on to track **037°** climbing to **4500 FT**.  
Then turn **LEFT** join the holding.

THR→(NM)	8.7	4.9
BAL→(NM)	8.9	5.0
LAK→(NM)	9.4	5.5

OCA / H published in feet.

CAT	ILS CAT I	LOC only	CIRCLING
A	620 / 244	720 / 344	870 / 494
B	620 / 244	720 / 344	1000 / 624
C	620 / 244	720 / 344	1210 / 834
D	620 / 244	720 / 344	1260 / 884

- WARNINGS:
- ① Procedure turn MAX 180KT.
  - Initial approach TR close to Bosnia and Herzegovina/Croatian border. Pilots should ensure they remain within Bosnia and Herzegovina airspace at all times.

THIS PAGE INTENTIONALLY LEFT BLANK